

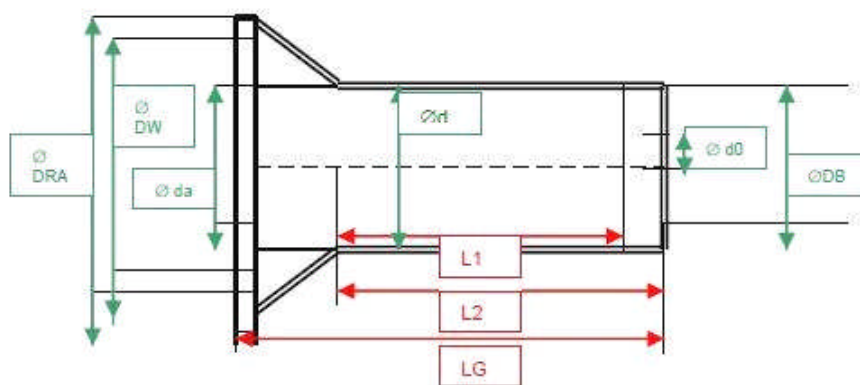
Spools for Industrial Threads



Snap-Kingspools



article	material	LG	L1	L2	DRA	DB	d	d0	da	DW max.	volume max.
		mm	mm	mm	mm	mm	mm	mm	mm	mm	mm ³
KSMmini	PP	55.5	36.0	40.0	45.8	17.5	-	8.3	16.4	39.5	34,329
KSMN	PP	70.0	50.0	57.0	45.5	22.0	-	9.6	16.9	39.5	42,264
KS1N	PP	108.5	75.0	83.0	74.8	30.0	-	10.0	30.0	69.5	231,510
KS2	PP	156.5	122.0	130.0	84.2	30.0	-	10.0	29.8	74.5	455,580



Spools for Industrial Threads



Kingspools without snap



article	material	LG	L1	L2	DRA	DB	d	d0	da	DW max.	volume max.
		mm	mm	mm	mm	mm	mm	mm	mm	mm	mm ³
KS2A	PP	160.0	120.0	130.0	98.0	30.0	25.5	10.0	30.2	92.0	895,750
KS2AC	PP-Copo	160.0	120.0	130.0	98.0	30.0	25.5	10.0	30.2	92.0	895,750
KS3A	PP	170.0	120.0	130.0	110.0	30.0	25.5	10.0	30.2	103.5	792,835

