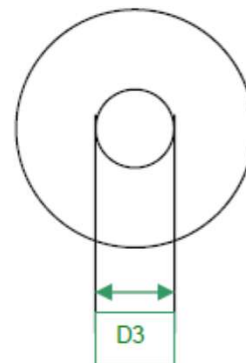
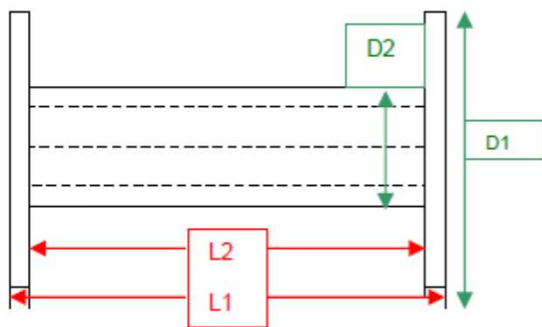


DIN - Spools



article	material	L1 mm	L2 mm	D1 mm	D2 mm	D3 mm	Weight g	pcs/ Box	Volume cm ³
DIN-100	PS or ABS	100	80	100	63	16	125	100	330
DIN-125	PS or ABS	125	100	125	80	16	200	64	609
DIN-160	PS or ABS	160	128	160	100	22	350	36	1,378
DIN-200	PS or ABS	200	160	200	125	22	600	18	2,668

periplast GmbH & Co. KG

Hatzfelder Straße 157, 42281 Wuppertal, Germany

info@periplast.de | www.periplast.de

Tel.: +49 202 270 46 0