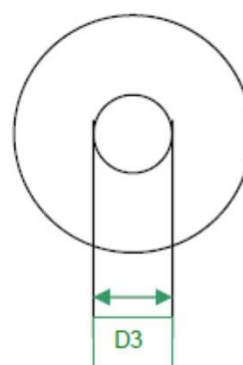
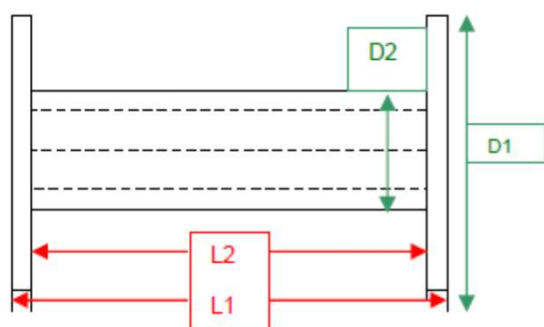


Spools for Solder Wire



article	material	L1 mm	L2 mm	D1 mm	D2 mm	D3 mm	
LS50	LDPE	9.0	5.5	51.0	18.0	15.2	single-sided snap
L50	PP-Copo	13.0	7.5	50.0	23.0	20.0	
L100	PS	15.5	12.5	50.0	18.5	15.0	
L150	PP	16.5	13.0	63.5	28.0	25.0	
L110	PP	18.5	16.0	54.0	27.0	25.0	
L300	PS	24.0	18.5	92.0	74.0	70.0	
L200	PP	26.0	23.0	63.5	28.0	25.0	
L250	PP	38.0	33.0	50.0	18.5	15.5	
L250C	PP	37.0	33.0	49.5	18.5	15.3	
L250BN	PP	40.0	36.0	45.0	19.0	16.0	with pin
L600	PS	43.0	39.0	65.0	28.0	25.0	
L500M	PS	57.5	50.0	50.0	18.0	15.5	
L900	PP	76.0	72.5	64.5	28.0	25.0	
L500	PS	77.5	70.0	50.0	18.5	15.5	
L1000	PS	78.0	68.0	70.0	33.0	30.0	ribbed flange
L1001	PS	78.0	68.0	70.0	50.0	15.0	ribbed flange

Further dimensions on the next page

Spools for Solder Wire

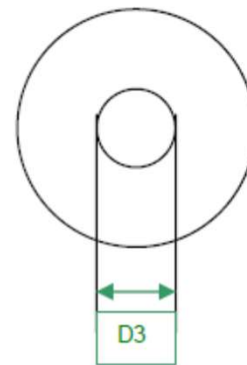
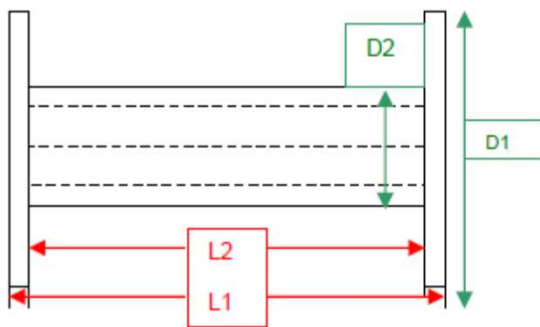


article	material	L1 mm	L2 mm	D1 mm	D2 mm	D3 mm	
L600R	PS	43.0	39.0	65.0	28.0	25.0	ribbed flange
L500R	PP-Copo	44.0	34.0	71.0	33.0	30.0	ribbed flange
L1000R	PP-Copo	77.0	67.0	71.0	33.0	30.0	ribbed flange

article	material	L1 mm	L2 mm	D1 mm	D2 mm	D3 mm	
L500S	PP-Copo	63.0	49.0	63.0	37.0	11.5	special series
L1000S	PP-Copo	80.0	66.0	80.0	47.0	16.0	special series
L2500S	PP-Copo	100.0	82.0	100.0	47.0	16.0	special series
L5000S	PP-Copo	125.0	100.0	125.0	80.0	16.2	special series

article	material	L1 mm	L2 mm	D1 mm	D2 mm	D3 mm	
HSP01 6531	POM	85.5	70.0	79.3	34.3	16.5	

Spools for Bands, Strings & Cords



article	material	L1	L2	D1	D2	D3
		mm	mm	mm	mm	mm
SP1N	PP	17.0	14.0	70.0	35.0	14.0
SP2N	PP	33.0	30.0	70.0	25.0	14.0
SP3N	PP	44.0	41.0	70.0	17.0	14.0
SP9	PP	46.0	40.0	90.0	29.0	25.0
SP5N	PP	66.0	63.0	87.0	17.0	14.0
SP7N	PP	66.0	63.0	70.0	17.0	14.0
SP8	PP	85.0	80.0	90.0	29.0	25.0

Further dimensions on the next page

Spools for Bands, Strings & Cords



article	material	L1 mm	L2 mm	D1 mm	D2 mm	D3 mm
S900	PS	28.0	26.0	135.0	29.0	25.0
S800	PS	44.0	42.0	135.0	29.0	25.0
S200	LDPE	85.0	80.0	90.0	18.0	15.0
S200P	PP	85.0	80.0	90.0	18.0	15.0
S700	PP	105.0	100.0	100.0	29.0	25.0
S400	PP	120.0	114.0	90.0	29.0	25.0
S500	PP	120.0	114.0	100.0	29.0	25.0
S300	LDPE	120.0	115.0	90.0	18.0	15.0
S100	PP	122.0	115.0	90.0	29.0	25.0
S600	PP	135.0	130.0	120.0	29.0	25.0

Cores

article	material	width mm	ø mm
R10-R110	PS	10-110	33.3

