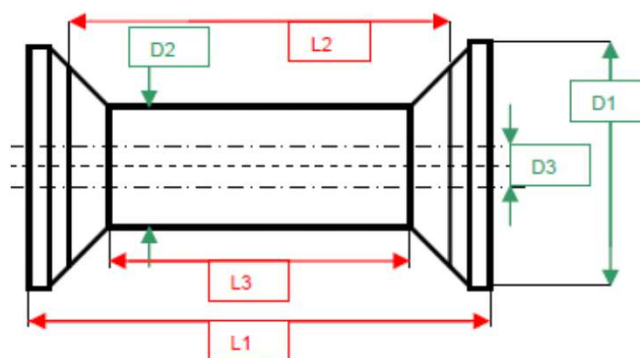


# Spools for Consumer Threads



## Snapspools with conical flange



article	material	L1 mm	L2 mm	L3 mm	D1 mm	D2 mm	D3 mm	volume mm <sup>3</sup>
KR50	PS	25.0	19.4	16.8	24.0	19.0	6.5	2,782
KR40	PS	32.0	25.5	16.5	30.0	14.0	6.5	11,218
KR60	PS	32.0	25.5	20.0	30.0	20.0	6.5	8,507
KR601	PS	32.0	25.5	21.2	30.0	22.2	6.5	7,029
KR100	PS	32.0	26.2	16.4	30.0	8.5	6.5	13,433
KR100Y40	PS	32.0	25.5	22.9	30.0	25.0	6.5	3,600
H4	PS	33.5	27.0	23.0	32.5	25.0	8.0	7,850
H51	PS	33.5	27.0	26.7	32.5	26.5	8.0	6,540
H5P	PP	33.5	27.0	20.3	32.5	20.5	8.0	11,334
H6	PS	33.5	27.0	14.5	32.5	16.0	8.0	12,546
H6P	PP	33.5	27.0	14.5	32.5	16.0	8.0	12,546
H6ABS	ABS	33.5	27.0	14.5	32.5	16.0	8.0	12,546

Further dimensions on the next page

## Spools for Consumer Threads

---



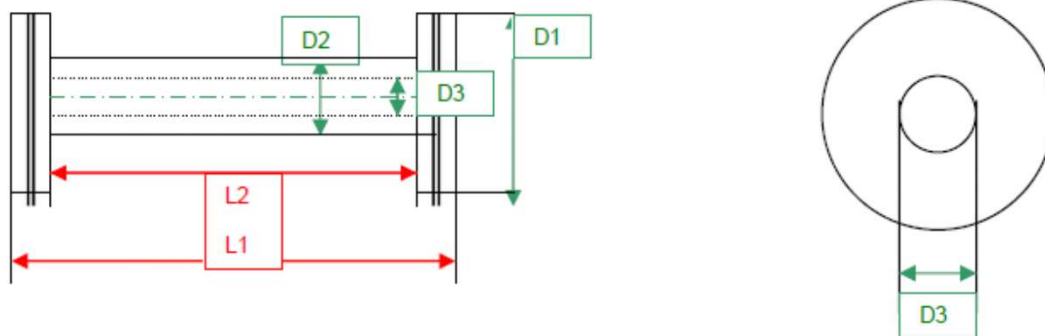
### Snapspools with conical flange

article	material	L1 mm	L2 mm	L3 mm	D1 mm	D2 mm	D3 mm	volume mm <sup>3</sup>
H40T	PP	45.5	38.5	25.4	34.0	10.8	8.0	25,403
H50	PS	45.5	38.5	31.7	34.0	21.8	8.0	18,021
KR16	ABS	46.0	39.0	27.3	37.0	16.2	7.0	27,960
KR16R	ABS	46.0	39.0	27.3	37.0	16.2	8.4	27,960
KR16S	PS	46.0	39.0	27.3	37.0	16.2	7.0	27,960
KR17	PP	46.0	39.0	27.3	37.0	16.0	7.0	27,900
KR60M	PS	46.0	39.0	31.7	37.0	24.0	7.0	20,592
KR60M1	PS	46.0	39.0	33.6	37.0	27.2	7.0	17,100
A600	PS	46.5	40.5	38.0	16.0	11.4	8.3	3,687
D300P	PP	50.3	40.5	35.7	20.0	11.4	8.3	7,725
KR11	PS	58.0	50.0	39.6	43.0	24.5	8.0	42,733
KR12	PS	58.0	50.0	34.5	43.0	15.4	8.0	52,350
KR121	PP	58.0	50.0	34.5	43.0	15.4	8.0	52,350
H70	PS	58.0	50.0	41.6	43.0	28.0	8.0	37,078
D250	PP	79.5	71.0	59.5	43.0	22.5	7.8	68,778

# Spools for Consumer Threads



## Snapspools with straight flange



article	material	L1 mm	L2 mm	D1 mm	D2 mm	D3 mm	volume mm <sup>3</sup>	
A100	PS	47.6	39.5	22.0	13.0	8.0	9,748	
A200	PS	55.0	43.5	20.0	9.5	7.5	10,582	
A500	PS	55.0	43.5	20.0	14.5	7.5	6,482	
A900	PS	56.0	43.0	19.0	14.4	7.5	5,061	
PW50	PS	56.0	43.5	12.7	9.0	6.5	2,804	
PW100	PS	56.0	43.5	15.5	9.5	7.0	5,125	
A300	PS	56.0	43.5	17.0	9.5	7.0	6,790	
PW200	PS	56.0	43.5	19.0	10.5	7.5	8,572	
PW500	PS	56.0	43.5	28.0	11.5	8.0	22,165	
A950	PS	56.0	43.5	29.0	14.0	8.0	22,036	
D200	PS	62.5	56.0	30.0	20.8	8.0	20,647	
A700	PS	63.5	54.0	50.0	10.0	7.0	85,500	single-sided snap

## Spools for Consumer Threads

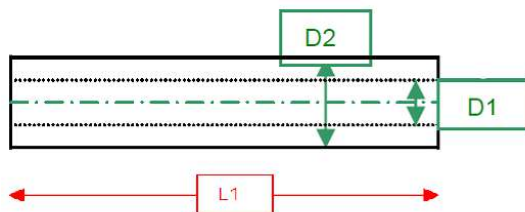


### Spools with straight flange without snap

article	material	L1 mm	L2 mm	D1 mm	D2 mm	D3 mm	volume mm <sup>3</sup>
D450	PS	51.0	40.3	25.0	17.0	7.5	10,629

### Cylindrical Tubes

article	material	L1 mm	D1 mm	D2 mm
ZH56	PS	56.0	9.6	11.6
ZH63	PS	63.0	9.1	12.0



# Displays for Consumer Threads

---

