

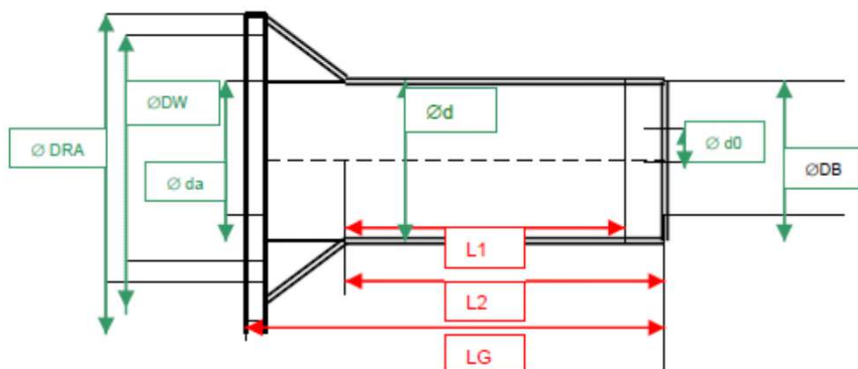
Spools for Industrial Sewing Threads



Snap-Kingspools



article	material	LG	L1	L2	DRA	DB	d	d0	da	DW max.	volume max.
		mm	mm	mm	mm	mm	mm	mm	mm	mm	mm ³
KSMmini	PP	55.5	36.0	40.0	45.8	17.5	-	8.3	16.4	39.5	34,329
KSMN	PP	70.0	50.0	57.0	45.5	22.0	-	9.6	16.9	39.5	42,264
KS1N	PP	108.5	75.0	83.0	74.8	30.0	-	10.0	30.0	69.5	231,510
KS2	PP	156.5	122.0	130.0	84.2	30.0	-	10.0	29.8	74.5	455,580



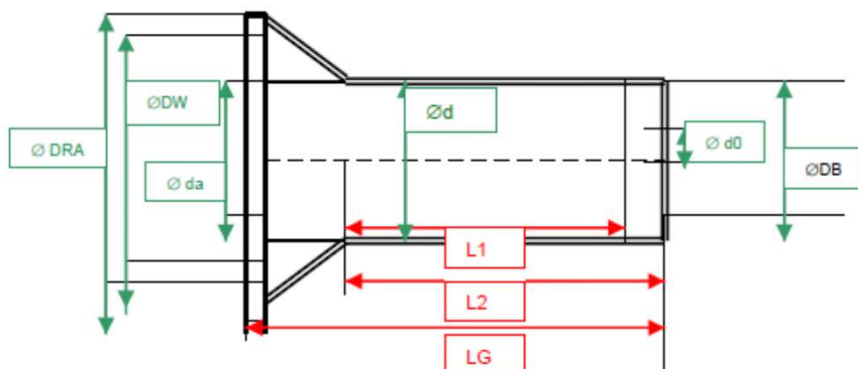
Spools for Industrial Sewing Threads



Kingspools without snap



article	material	LG	L1	L2	DRA	DB	d	d0	da	DW max.	volume max.
		mm	mm	mm	mm	mm	mm	mm	mm	mm	mm ³
KS2A	PP	160.0	120.0	130.0	98.0	30.0	25.5	10.0	30.2	92.0	895,750
KS2AC	PP-Copo	160.0	120.0	130.0	98.0	30.0	25.5	10.0	30.2	92.0	895,750
KS3A	PP	170.0	120.0	130.0	110.0	30.0	25.5	10.0	30.2	103.5	792,835



Spools for Industrial Sewing Threads



Cone Tubes



article	material	L1	L2	L3	D1	D2	angle	surface
		mm	mm	mm	mm	mm		
KON	PP	114.0	4.5	104.0	37.7	30.1	2°	grooved
KON168	PP	168.0	6.0	151.0	50.0	29.0	3° 21'	grooved
C100N	PP	112.0	4.0	103.0	37.7	30.1	2°	dotted
C200	PP	114.0	7.0	102.0	33.2	21.2	3°	dotted
C233R	PP	120.0	9.0	100.0	36.7	22.0	3° 30'	dotted
C300	PP	120.0	9.0	100.0	37.0	28.6	2°	grooved
C400	PP	97.0	4.0	88.0	36.3	22.2	4°	grooved
CW120	PP	120.0	6.0	108.0	32.0	19.4	3°	dotted

